

36' x 68' = 2448 sq ft



Scale 1/8" = 1'

WINDOW SIZE = 3'4"



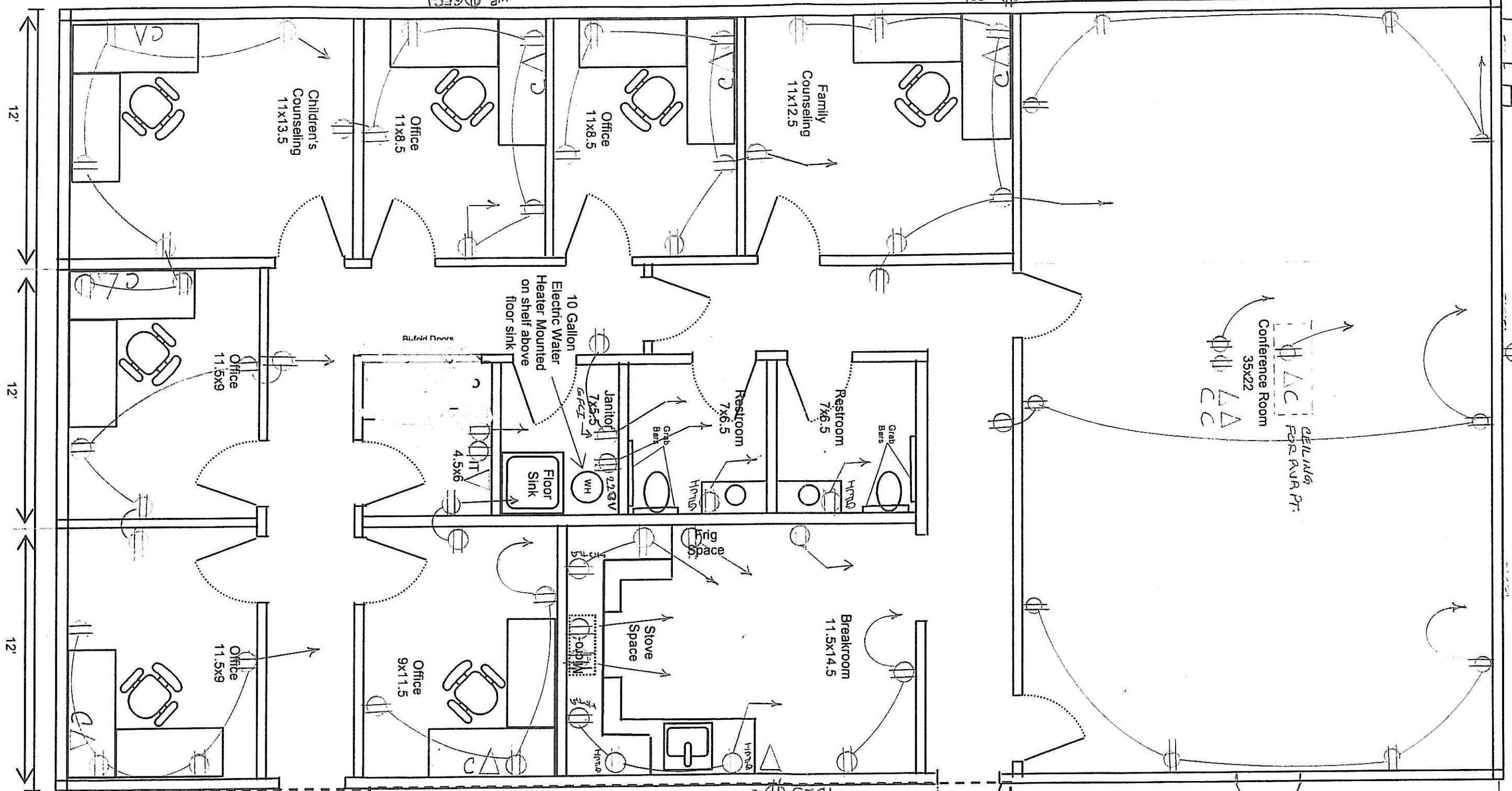
ELEC MAIN
GAS MAIN

HEAT/AC
3.5T Duo/Rack
Gas

HEAT/AC
3.5T Duo/Rack
Gas

HEAT/AC
2.5 Duo/Rack
Gas

89



11.5' 5' 4M

CONFERENCE ROOM
35x22
GELING FOR RVR PT.
AC

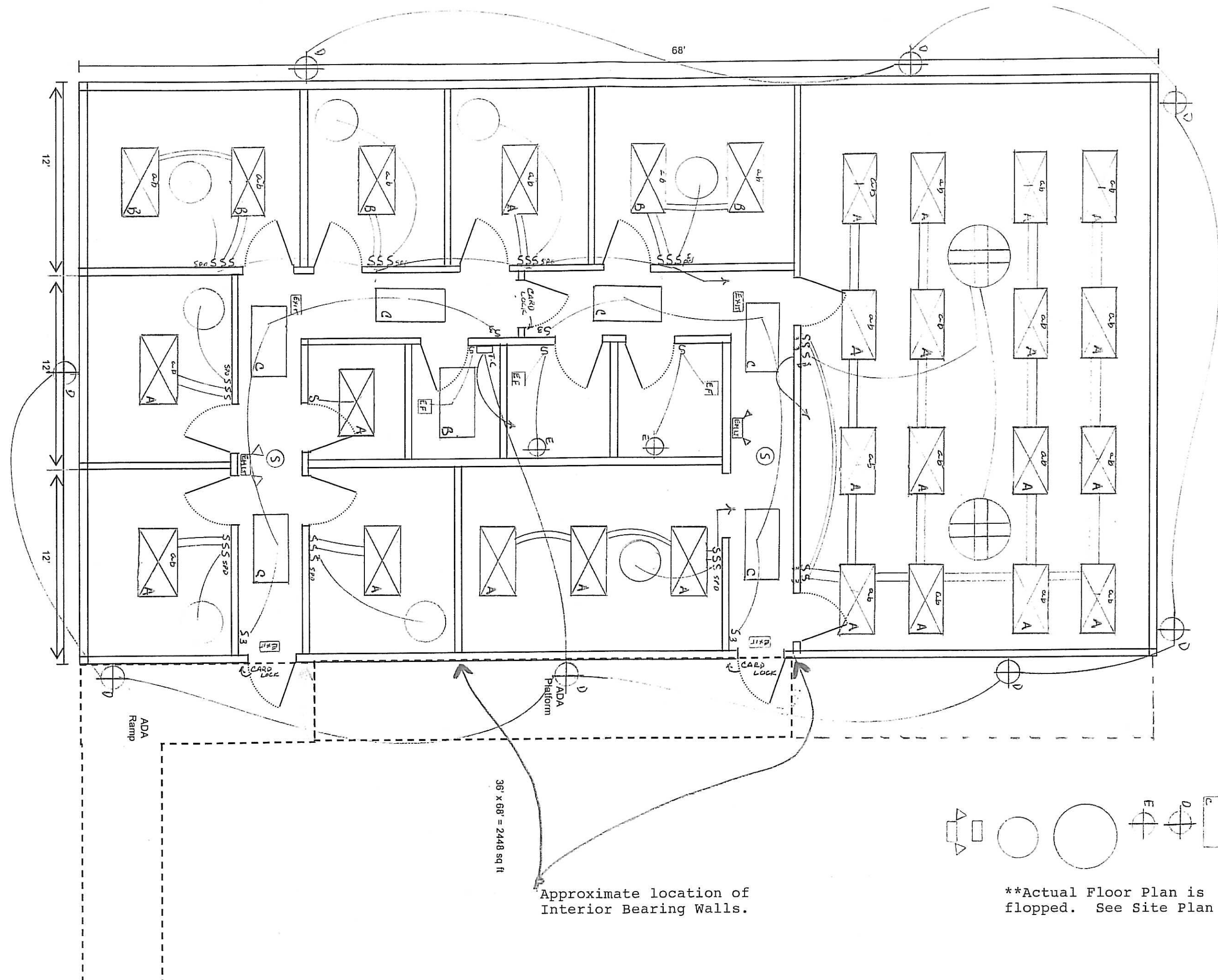
ADA
Platform

36' x 6'

CRC c
buildir

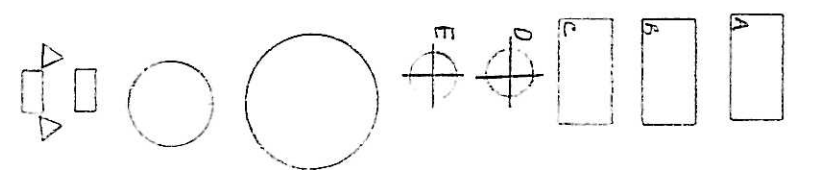
ADA
Ramp

- ⊕ 110V Duplex RECEPT
- ⊕ 220V RECEPT
- COIL FURNER
- △ TELEPHONE



Approximate location of Interior Bearing Walls.

36' x 68' = 2448 sq ft



**Actual Floor Plan is flopped. See Site Plan