

Source: Department of Water Resources, Bulletin 118 Groundwater Basin Boundaries & GSA Boundaries

Author: Glenn County, Water Resources Staff, Nov. 2019

Corning Subbasin Public Meeting

November 6, 2019
Corning Senior Center

*Sustainable Groundwater
Management Act (SGMA)
Implementation*

Meeting Overview



- Welcoming Remarks & Introductions
- Agenda Overview
- Sustainable Groundwater Management Act (SGMA) Background
- Local Agency Updates
- Local Groundwater Sustainability Agency Cooperation
- Next Steps

SGMA Background

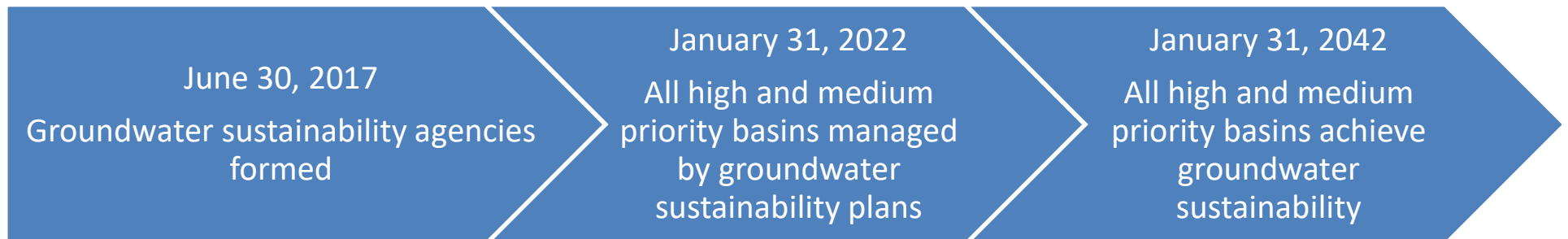


- SGMA is a package of three bills (AB 1739, SB 1168, SB 1319)
- Nearly 100 groundwater basins statewide must comply
- Sustainability must be achieved within 20 years
- Requirement to manage groundwater under a Groundwater Sustainability Plan (GSP)
- Local control is a hallmark of SGMA



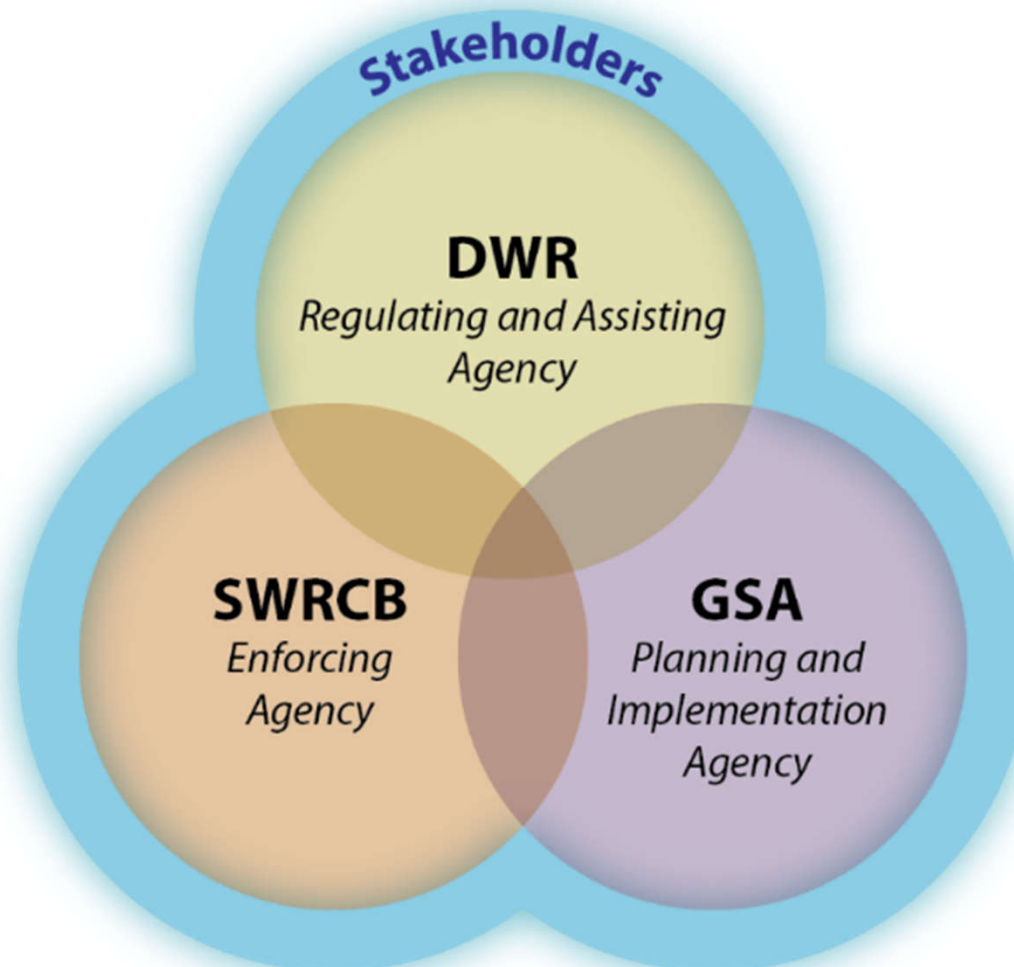
The management and use of groundwater in a manner that can be maintained during the planning and implementation horizon (50 years) without causing undesirable results.

SGMA Milestones



SGMA Background

Roles and Responsibilities



SGMA Background

Groundwater Sustainability Agency (GSA) Eligibility



- Any agency with water supply, water management or land use responsibilities
- Single local public agency or combination of local agencies can form a GSA using a Joint Powers Agreement (JPA) or other legal agreement.

SGMA Background

Achieving Sustainability and Avoiding Undesirable Results



Lowering
GW Levels



Reduction
of Storage



Seawater
Intrusion



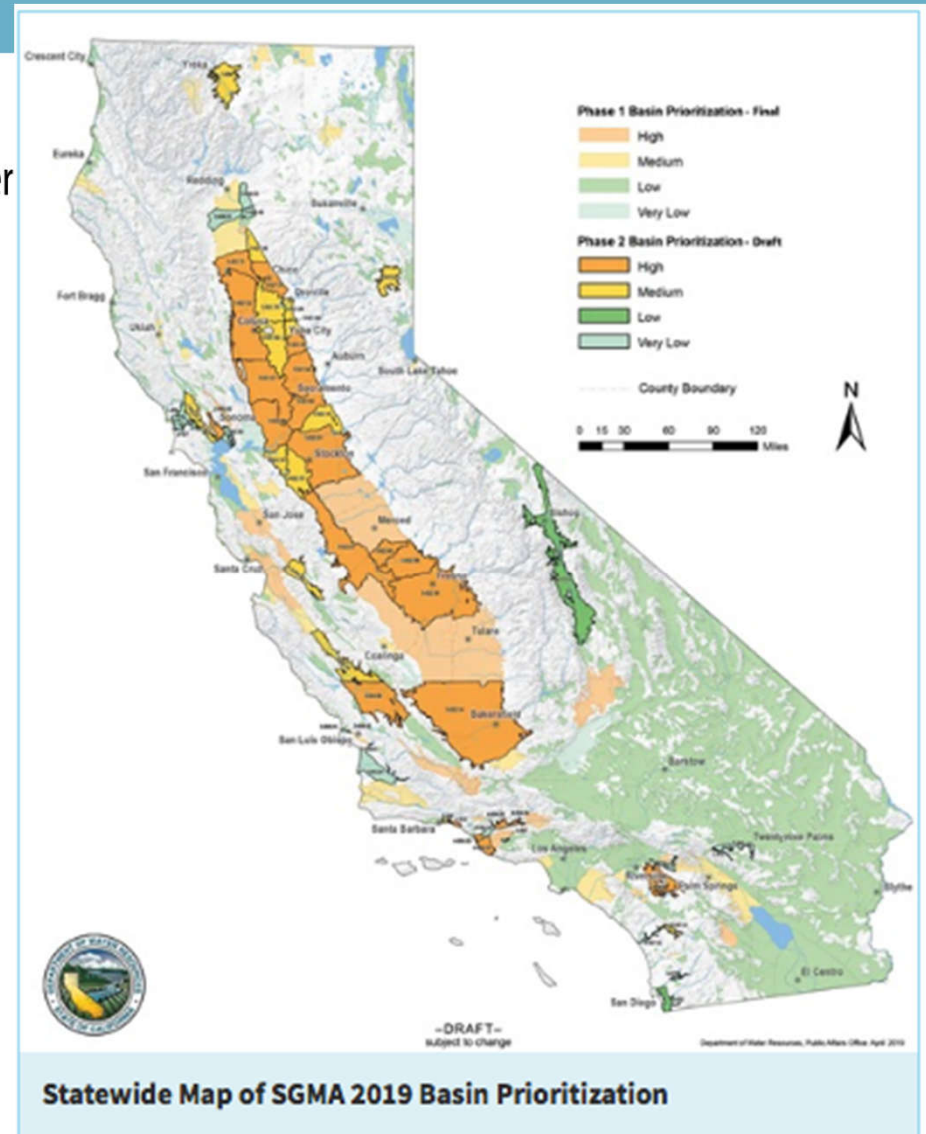
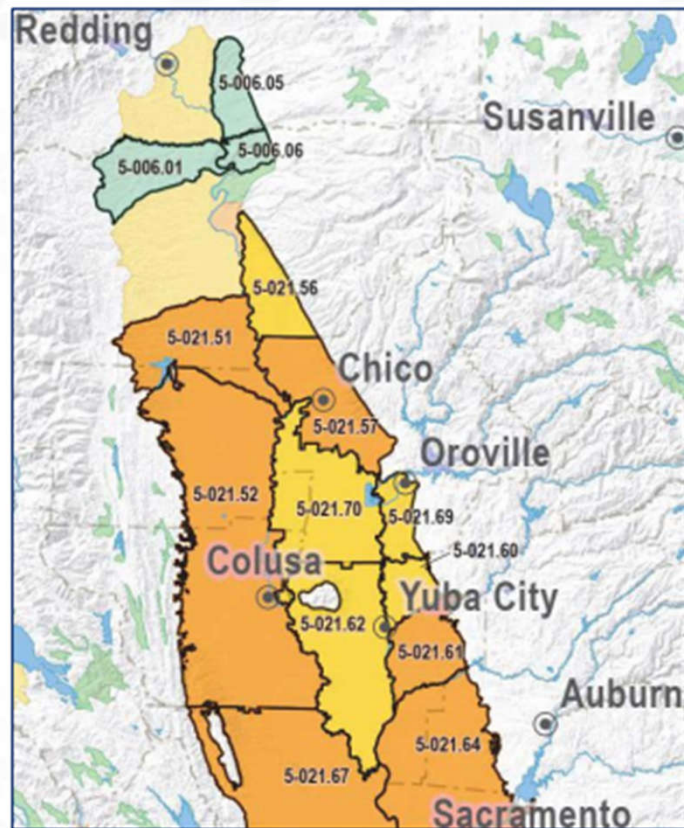
Degraded
Quality



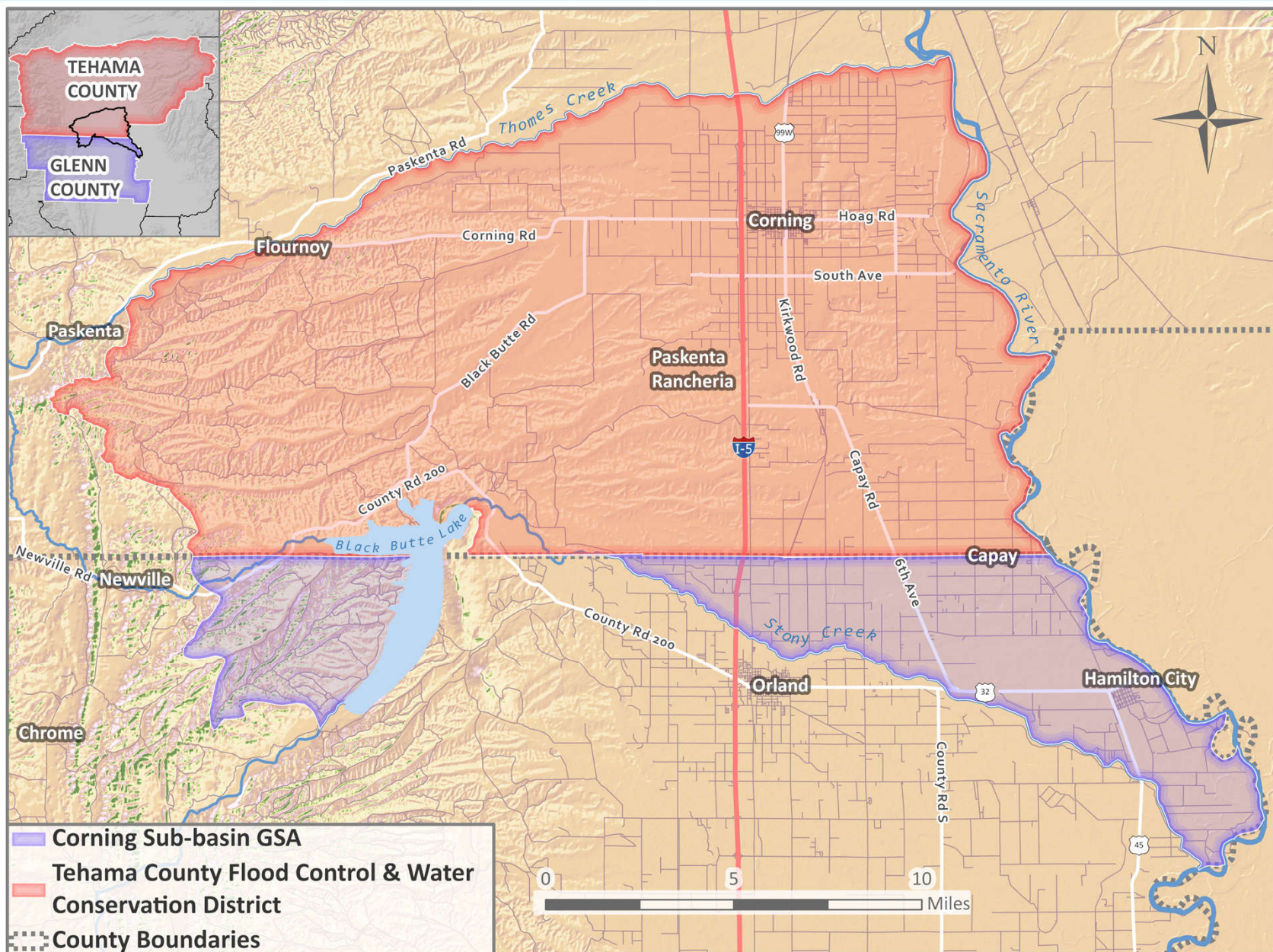
Land
Subsidence



Surface Water
Depletion



Corning Subbasin Boundaries



Source: Department of Water Resources,
Bulletin 118 Groundwater Basin Boundaries & GSA Boundaries

Author: Glenn County,
Water Resources Staff, Nov. 2019

SGMA Background

Groundwater Sustainability Plan (GSP) Required Contents



1. Administrative Information

- §354.4. General Information
- §354.6. Agency Information
- §354.8. Description of Plan Area
- §354.10. Notice & Communication

2. Basin Setting

- §354.14. Hydrogeologic Conceptual Model
- §354.16. Groundwater Conditions
- §354.18. Water Budget
- §354.20. Management Areas

3. Sustainable Management Criteria

- §354.24. Sustainability Goal
- §354.26. Undesirable Results
- §354.28. Minimum Thresholds
- §354.30. Measurable Objectives

4. Monitoring Networks

- §354.34. Monitoring Network
- §354.36. Representative Monitoring
- §354.38. Assessment & Improvement
- §354.40. Reporting Monitoring Data to the Department

5. Projects and Management Actions

- §354.44. Projects & Management Actions

SGMA Background

Q & A



Questions?

Initial SGMA Implementation Efforts in the Corning Subbasin

Groundwater Sustainability Planning

- Corning Subbasin received a **\$1 million grant** from the State of California to develop one GSP for the subbasin. Glenn County is administering the grant on behalf of both GSAs.
- GSAs are currently **in the process of selecting a technical consultant for GSP development.**

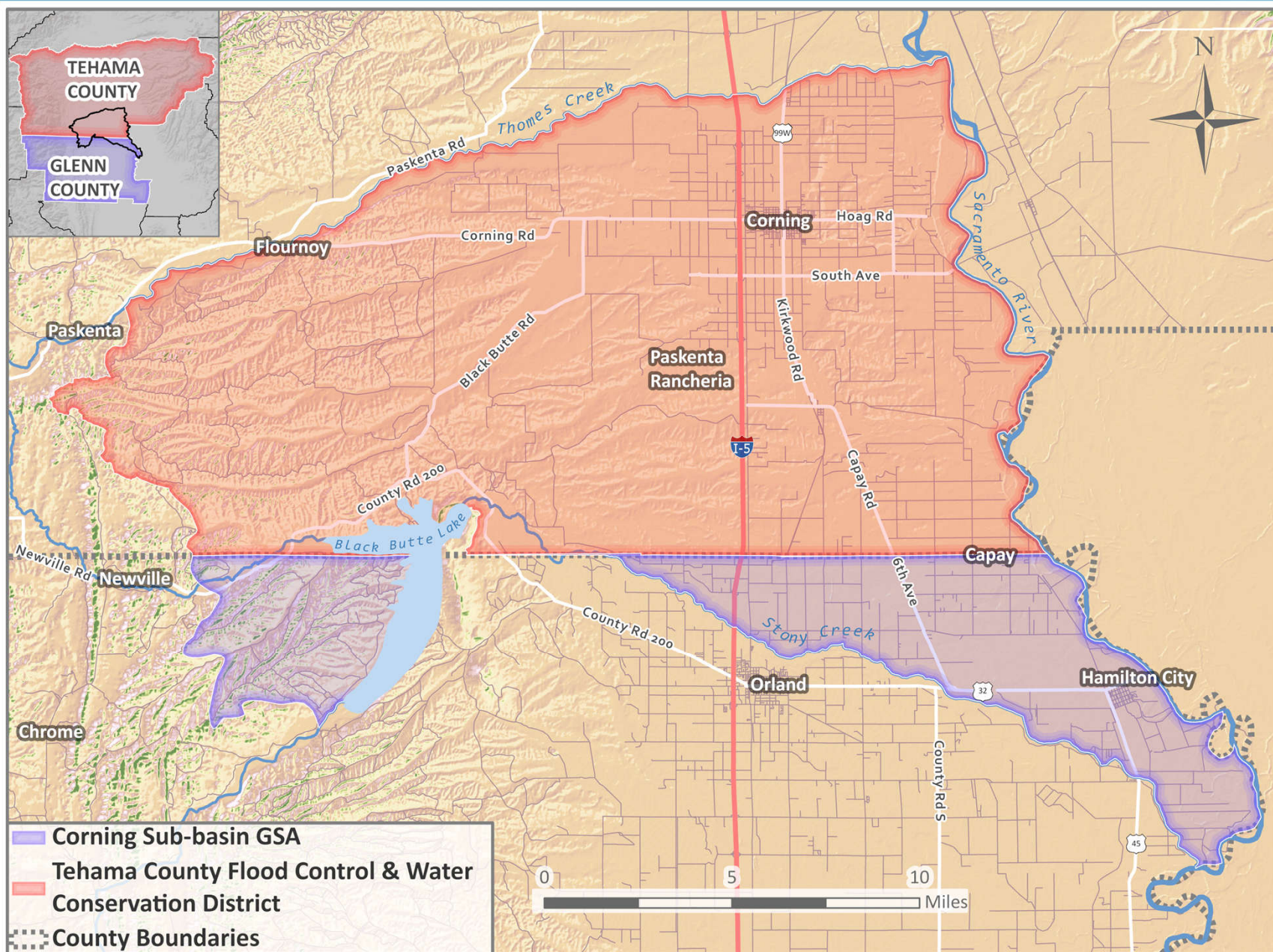
Initial SGMA Implementation Efforts in the Corning Subbasin

Stakeholder Outreach & Engagement

GSAs have secured the services of the Consensus Building Institute (CBI) to provide facilitation support:

- to assist the Corning Subbasin GSAs **execute a cooperation agreement**
- **begin early stakeholder outreach and engagement**, including development of a **Communications & Engagement Plan**, for Corning Subbasin SGMA implementation.

Corning Subbasin Local Agency Cooperation



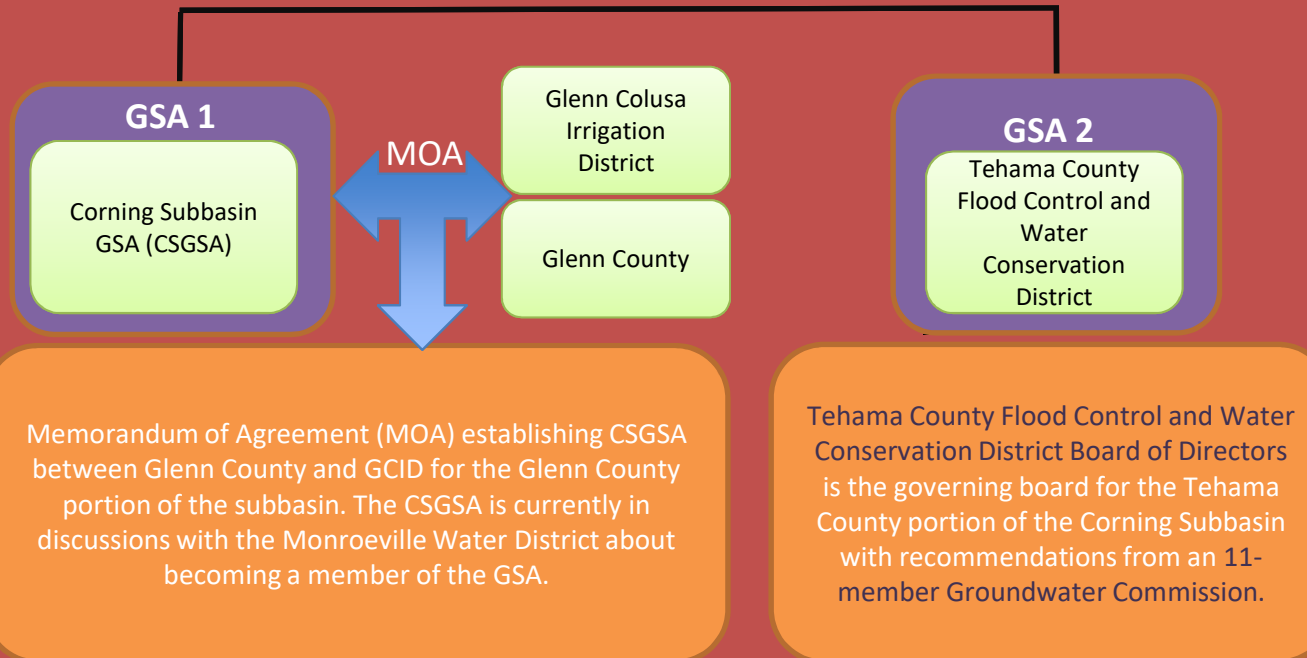
Source: Department of Water Resources,

Author: Glenn County, Water Resources Planning Department

Corning Subbasin Existing Governance

Groundwater Sustainability Agencies (GSA) Corning Subbasin

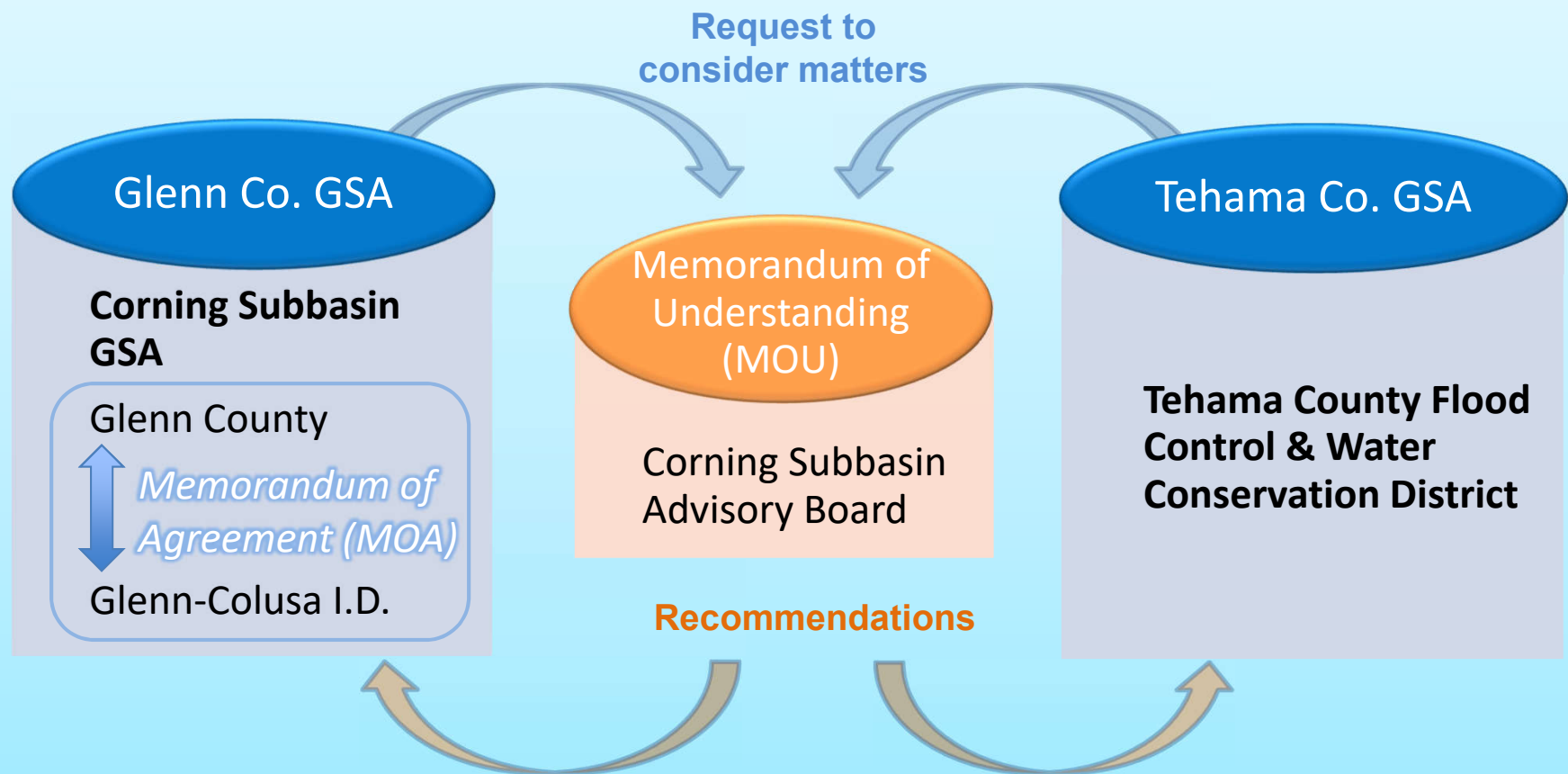
There are currently 2 GSAs comprised of three agencies in the subbasin.



Corning Subbasin Cooperative Governance Structure

Each GSA retains autonomy

Corning Subbasin



Purpose of GSA Cooperation Agreement



GSAs in the Corning Subbasin are entering into an agreement to:

- Develop and implement a **single GSP** for the subbasin
- **Cooperatively** carry out the purposes of SGMA, including **coordination with adjoining subbasins**
- Coordinate **subbasin-wide public involvement** and stakeholder outreach and engagement in developing and implementing the Corning Subbasin GSP

Corning Subbasin Advisory Board

Primary Purposes



- **Cooperation forum** for Groundwater Sustainability Agencies (GSAs) in the subbasin
- **Public venue** in accordance with the Ralph M. Brown Act for **public involvement in GSP development** and implementation in the Basin
- The Advisory Board makes **advisory recommendations** to the GSAs concerning development and implementation of the GSP.

Note: All decision-making authority resides with the GSAs' governing bodies
(providing other opportunities for public involvement).

Corning Subbasin Advisory Board

Composition and Representation



- Composed of **three primary** members and **one alternate** per GSA
- One **primary** member must be an **elected official** serving on the member agency's governing body (i.e. board of supervisors, board of directors)
- The remaining **2 primaries** and **1 alternate** members may be an **elected official or appointees** of the GSAs.

GSA Cooperation

Q & A



Questions?

Next Steps



- Legal agreement to Member public agencies' governing boards for final approval by the **end of the year**
- Seating of Corning Subbasin Advisory Board by **early 2020**
- Advisory Board publicly noticed meetings begin in **spring 2020**

How to Get Involved



For **meeting notifications and updates**:

- Glenn County Corning Subbasin GSA site:
<https://www.countyofglenn.net/dept/agriculture/water-resources/sustainable-groundwater-management-act-sigma/corning-subbasin>
- Tehama County Corning Subbasin GSA site:
<http://www.tehamacountypublicworks.ca.gov/flood/corning.html>
- For SGMA **general information**: <https://groundwaterexchange.org>

Closing Remarks



- Tania Carlone, Facilitator, (510) 684-0504
tcarlone@cbi.org
- Corning Subbasin GSA: Lisa Hunter, (530) 934-6501
lhunter@countyofglenn.net
- Tehama County GSA: Ryan Teubert, (530) 385-1462
rteubert@tcpw.ca.gov