

**Using only Google Maps it is very simple to see which properties are not usable
and would be eligible for exclusion**



This typical waste of water is why responsible Hill People that have limited water are so upset

Sacramento Valley Basin

6/21/19 Crossing Rancheria

Legend

 Cortina Indian Rancheria Property Line

CGA/GGA Joint TAC- June 21, 2019
Handout From Member of the Public #2

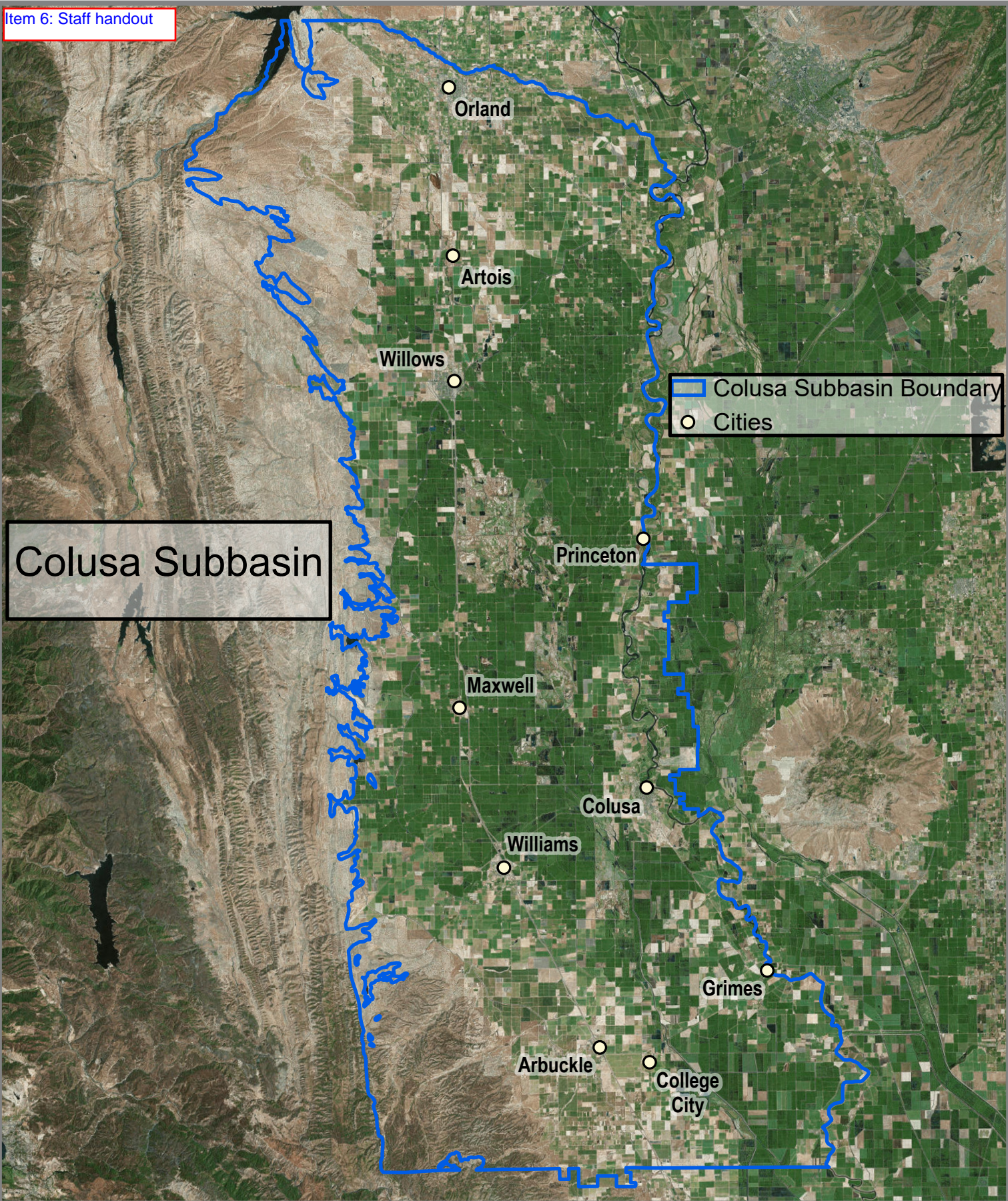
Cortina Rancheria



2000 ft

Google Earth

© 2018 Google



Joint CGA | GGA TAC Meeting
June 21, 2019



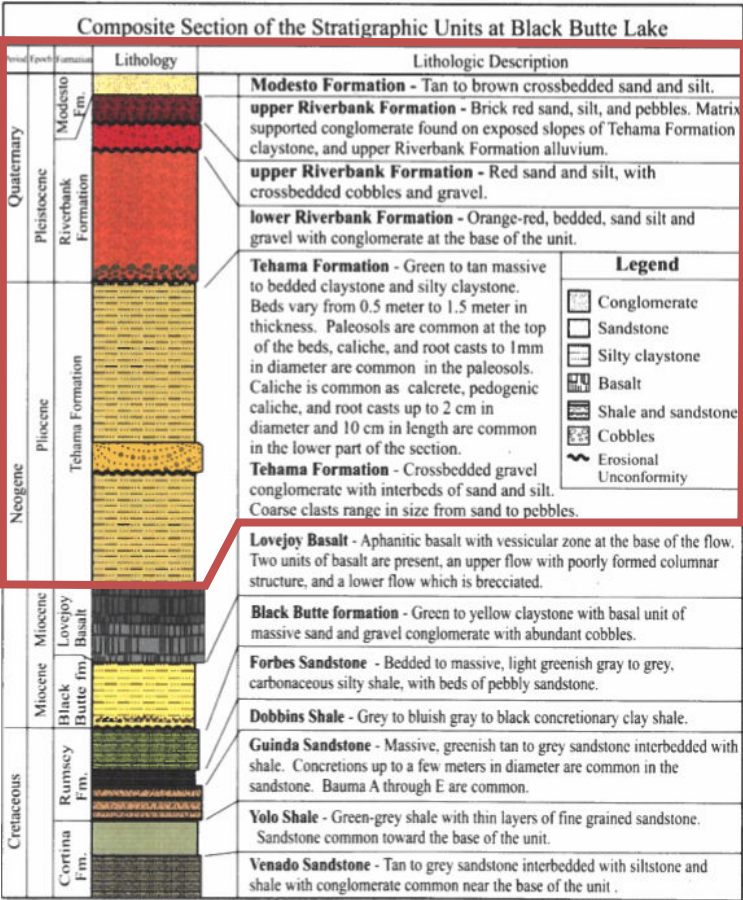
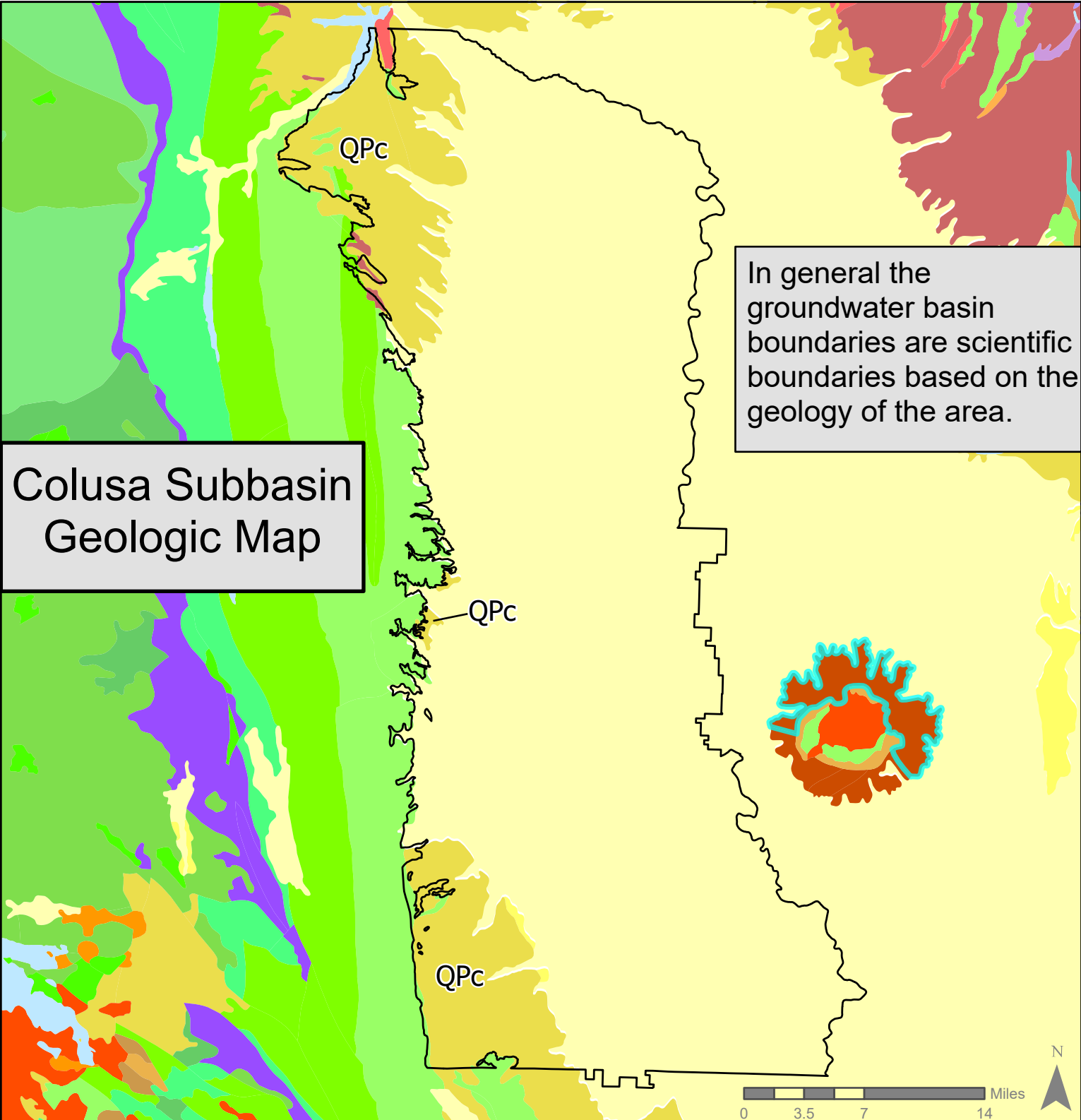


Figure 1. General stratigraphic section of the lithologic units exposed at Black Butte Lake.

General pertinent comments from Bulletin 118 – California’s Groundwater: Although only the upper surface of a groundwater basin can be shown on a map, the basin is three-dimensional and includes all subsurface fresh water-bearing material. These boundaries often do not extend straight down but are dependent on the spatial distribution of geologic materials in the subsurface. (Pg. 89, 2003)

QPc consists of Pliocene to Holocene-aged non-marine (continental) sedimentary rocks and older sandstone, shale, and gravel deposits, mostly loosely consolidated.

The Redding, Red Bluff, and Corning Subbasins (among others) are comprised of the same geologic rock type.

There are outcrops of the Tehama formation in the QPc area (Black Butte Lake) and they extend in the subsurface west to east throughout the Colusa Subbasin, interfingering with another major water bearing formation the Tuscan Formation.