



RFP 2023-02: BHCIP CONSULTING ARCHITECT

Questions & Answers

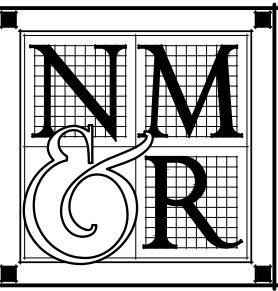
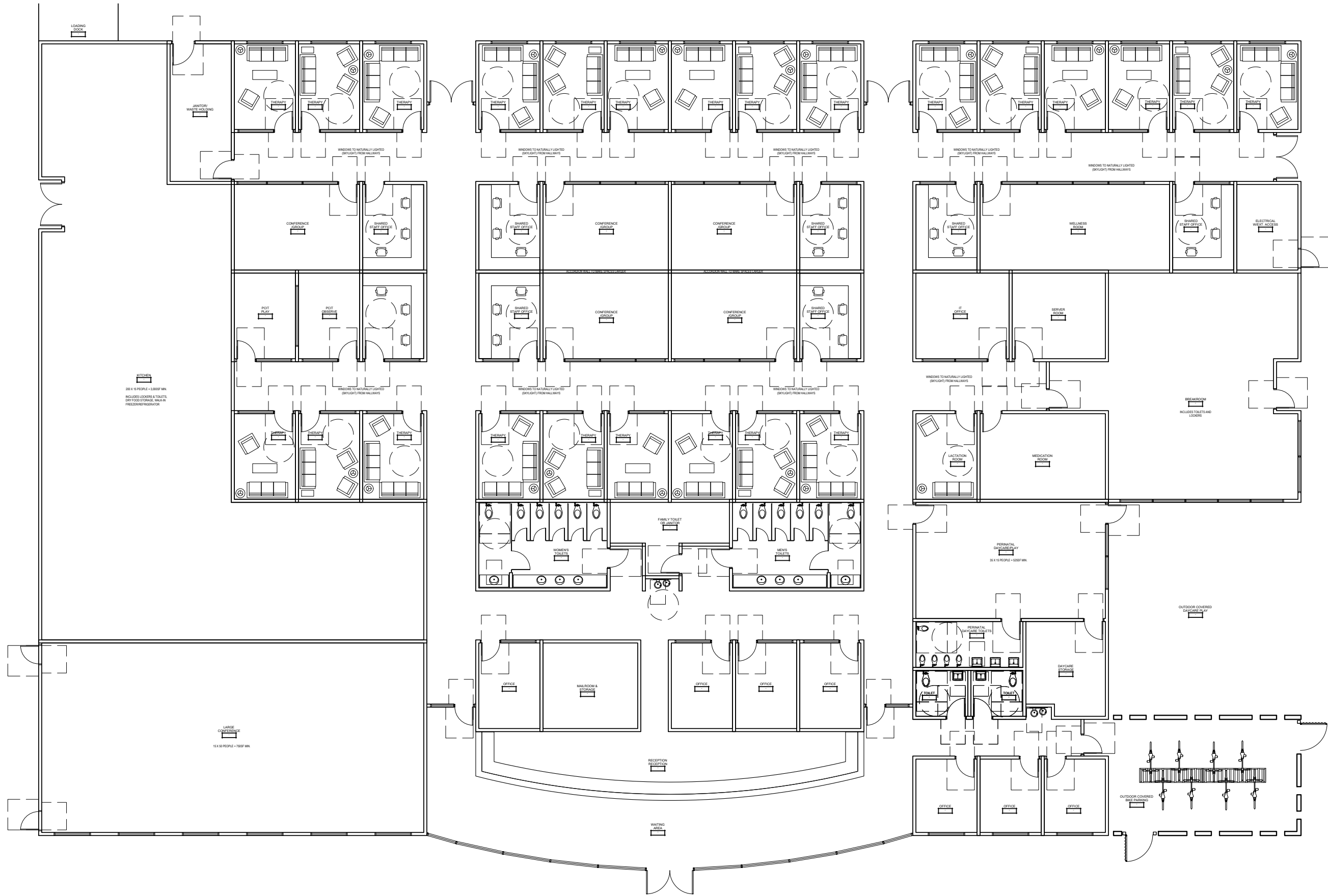
1. Q. If awarded Consulting Architect design services per RFP No:2023-02, does this disqualify the awarded architect from participating in the design/build RFP process? / Will the selected Criteria Docs Architect be precluded from the future Design-Build RFP?

A. No, this will not exclude anyone from participating in the design/build portion.

2. Q. Are the BHCIP Round 4 conceptual site plan and floor plans developed for the BHCIP application/award available for viewing to support the RFP response?

A. Yes, the conceptual drawing is on the following pages.

Plot Date: August 02, 2022 - 2:03 pm
 File Name: S:\Projects\6000\CIV\2022\22-6516 Glenn County Youth Facility\10 Dwggs & Models\11 CAD\X-NFLR_Option00.dwg



NICHOLS
 MELBURG
 ROSSETTO
 ARCHITECTS + ENGINEERS

300 KNOLLCREST DRIVE
 REDDING, CA. 96002
 (530) 222-3300 (530) 222-3538 FAX
<http://www.nmrdesign.com>

A PROPOSED
 YOUTH
 CENTER

GLENN
 COUNTY

ORLAND, CA

FLOOR PLAN

DR.	CSL
DT.	08/02/2022
SC.	1/16" = 1'-0"
NO.	22-6516

SHT.

OPT02

OF:

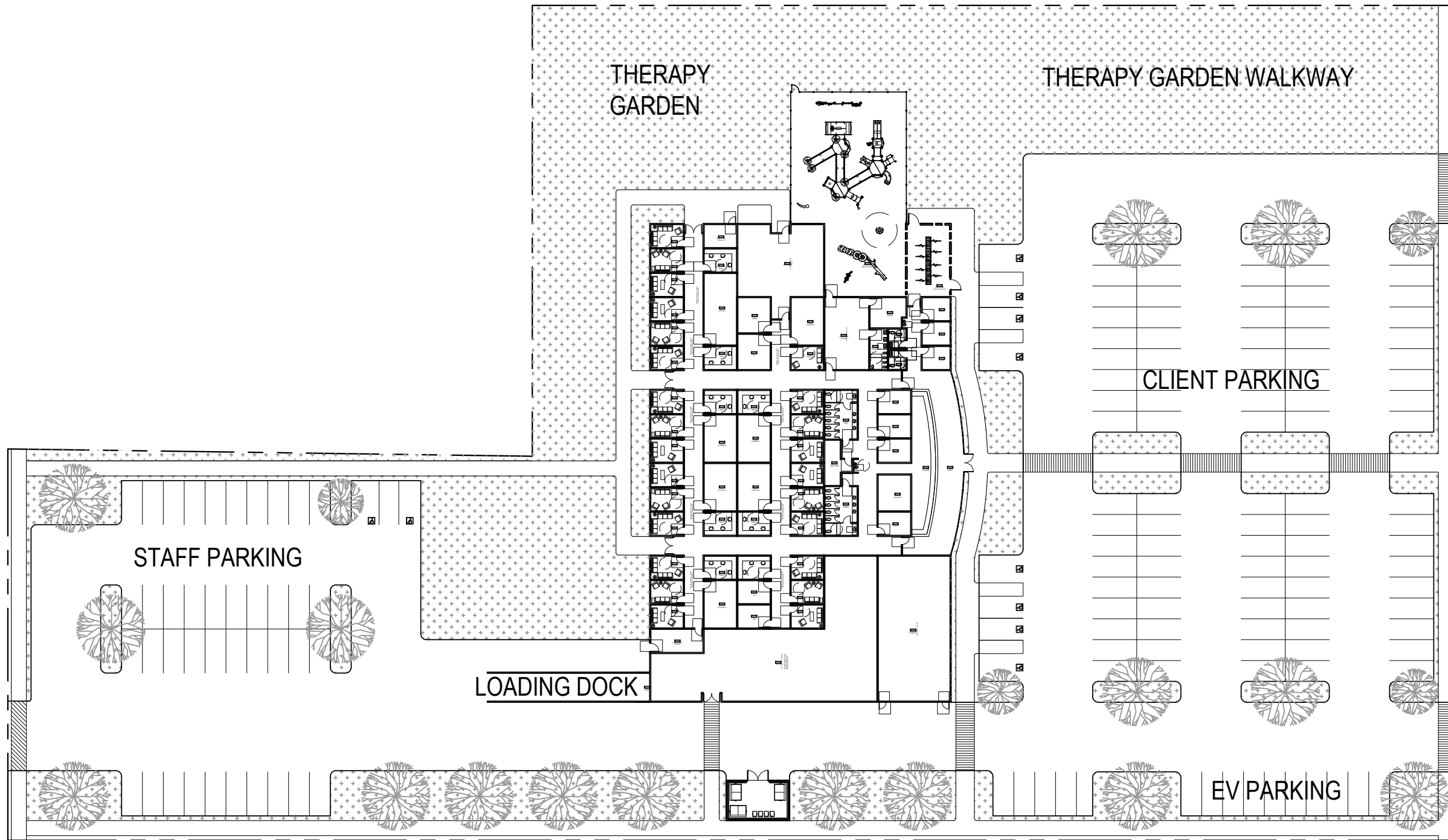


OVERALL FLOOR PLAN

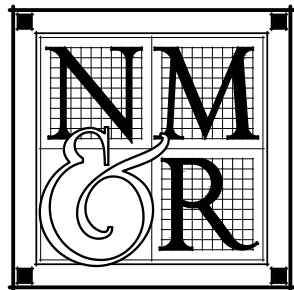
OPTION 02

SCALE: 1/16" = 1'-0"

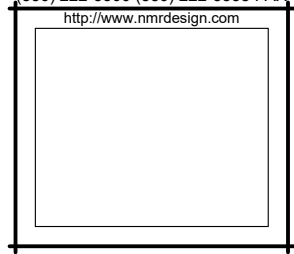
EAST WALKER STREET (32)



EAST TEHAMA STREET



NICHOLS
 MELBURG
 ROSSETTO
 ARCHITECTS + ENGINEERS
 300 KNOLLCREST DRIVE
 REDDING, CA. 96002
 (530) 222-3300 (530) 222-3538 FAX
<http://www.nmrdesign.com>



A PROPOSED
 YOUTH
 CENTER

GLENN
 COUNTY

ORLAND, CA

SITE PLAN

DR.	CSL
DT.	08/02/2022
SC.	1" = 50'-0"
NO.	22-6516

SHT.

OPT02

OF:



OVERALL SITE PLAN

OPTION 02

SCALE: 1" = 50'-0"