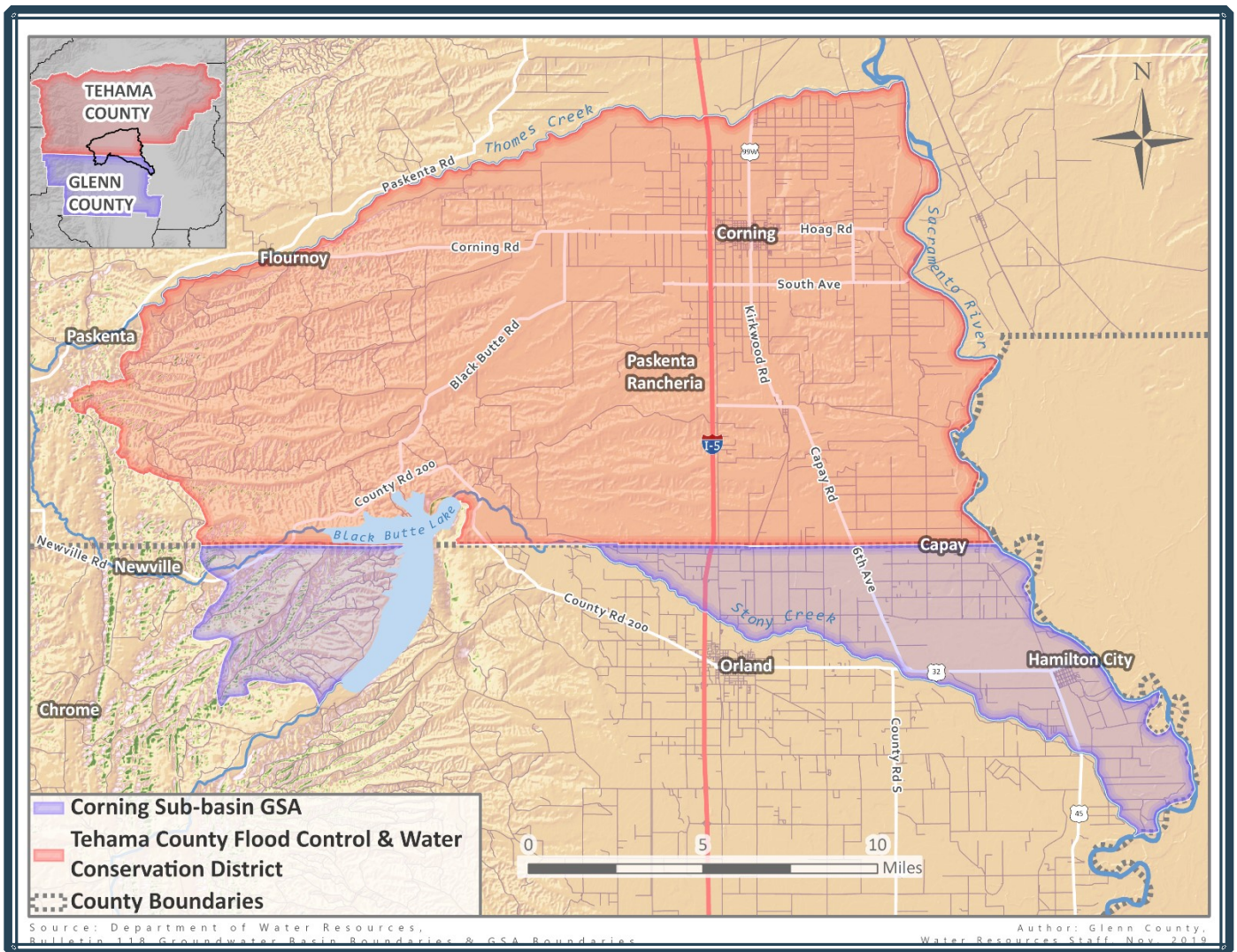


# CORNING SUBBASIN FACTSHEET

## WHAT IS SGMA?

The Sustainable Groundwater Management Act (SGMA) passed in the fall of 2014 establishing a new structure for managing groundwater resources in California. The Department of Water Resources defines groundwater basins and subbasins and assigns a priority designation in relation to SGMA (High, Medium, Low, Very Low). High and Medium priority basins are required to be managed under SGMA by a Groundwater Sustainability Agency (GSA) or the State Water Resources Control Board. GSAs have the opportunity to manage groundwater at the local level by developing and implementing a Groundwater Sustainability Plan by 2022 and ensuring sustainable conditions by 2042 while avoiding six distinct undesirable results. If GSAs are not successful locally, the State Water Resources Control Board will intervene and assume responsibility for basin management.



The Corning Subbasin is a portion of the larger Sacramento Valley Groundwater Basin covering approximately 207,342 acres. The subbasin spans Glenn and Tehama Counties and is bounded on the west by the Coast Ranges, on the north by Thomes Creek, on the east by the Sacramento River, and on the south by Stony Creek except for a small portion following the Glenn-Tehama County boundary. The GSA boundaries within the Corning Subbasin are shown above.

## GROUNDWATER SUSTAINABILITY AGENCIES IN THE CORNING SUBBASIN:

- Tehama County Flood Control and Water Conservation District GSA
- Corning Sub-basin GSA

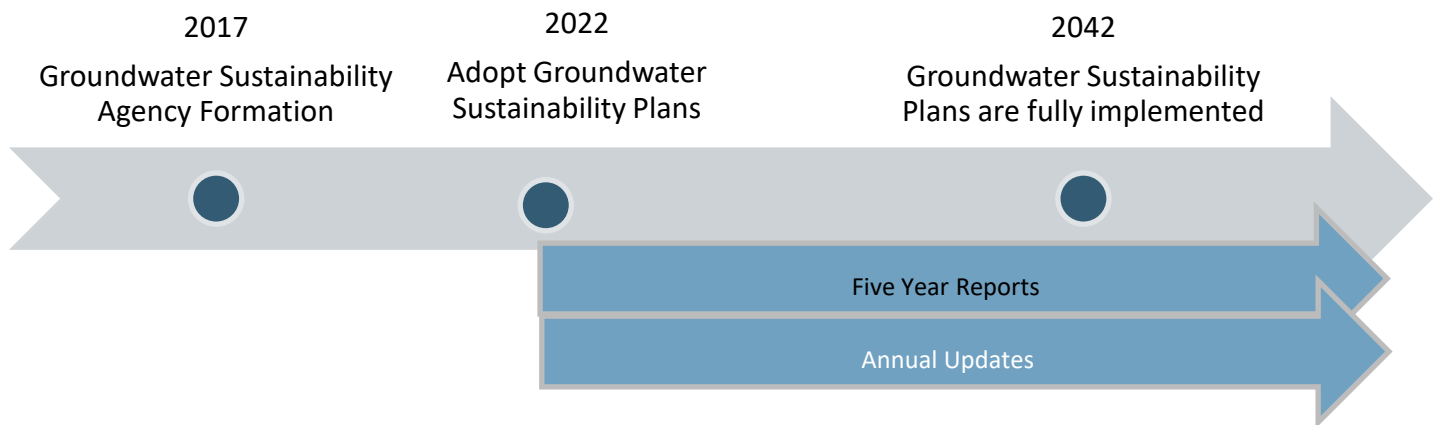
### CORNING SUB-BASIN GSA:

- Members
  - County of Glenn
  - Glenn-Colusa Irrigation District
- GSA Committee (Governing Body)
  - 2 representatives per agency
  - Decision-making authority

### TEHAMA COUNTY FLOOD CONTROL AND WATER CONSERVATION DISTRICT GSA:

- Governing Body is the District Board of Directors (Composed of the five members of the Tehama County Board of Supervisors)
  - 11 member Tehama County GSA Groundwater Commission supports the Board and has both decision making and advisory authorities

## SGMA TIMELINE



## WAYS TO GET INVOLVED

- To learn more about SGMA visit:

The Groundwater Exchange: <https://groundwaterexchange.org>

Glenn County Corning Subbasin GSA site: <https://www.countyofglenn.net/dept/agriculture/water-resources/sustainable-groundwater-management-act-sgma/corning-subbasin>

Tehama County Corning Subbasin GSA site:  
<http://www.tehamacountypublicworks.ca.gov/flood/corning.html>

- Contact Groundwater Sustainability Agency Staff:

Ryan Teubert  
Tehama County Flood Control and Water  
Conservation District  
530-385-1462  
[rteubert@tcpw.ca.gov](mailto:rteubert@tcpw.ca.gov)

Lisa Hunter  
Glenn County  
530-934-6501  
[lhunter@countyofglenn.net](mailto:lhunter@countyofglenn.net)