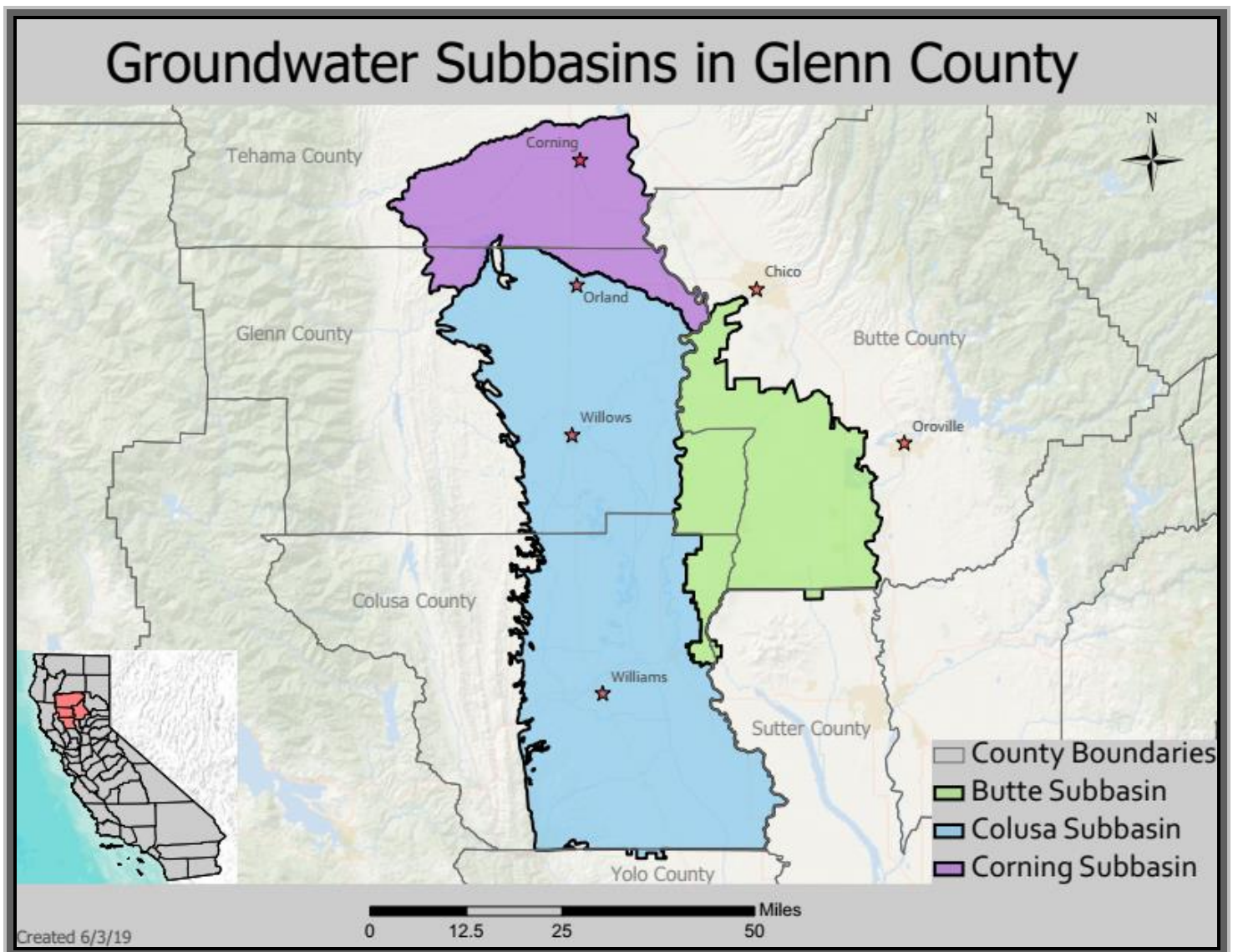


SUSTAINABLE GROUNDWATER MANAGEMENT IN GLENN COUNTY

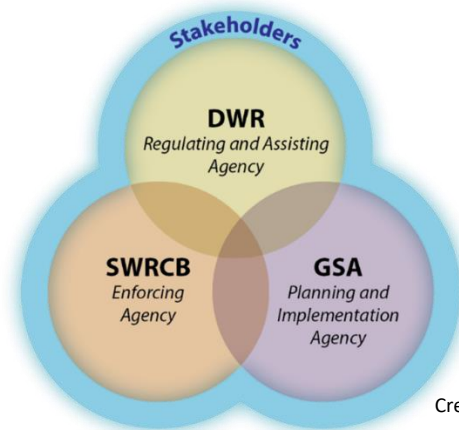
WHAT IS SGMA?

The Sustainable Groundwater Management Act (SGMA) passed in the fall of 2014 establishing a new structure for managing groundwater resources in California. The Department of Water Resources defines groundwater basins and subbasins and assigns a priority designation in relation to SGMA (High, Medium, Low, Very Low). High and Medium priority basins are required to be managed under SGMA by a Groundwater Sustainability Agency (GSA) or the State Water Resources Control Board. GSAs have the opportunity to manage groundwater at the local level by developing and implementing a Groundwater Sustainability Plan by 2022 and ensuring sustainable conditions by 2042 while avoiding six distinct undesirable results. If GSAs are not successful locally, the State Water Resources Control Board will intervene and assume responsibility for basin management. Glenn County has local GSA coverage and is currently compliant with SGMA.



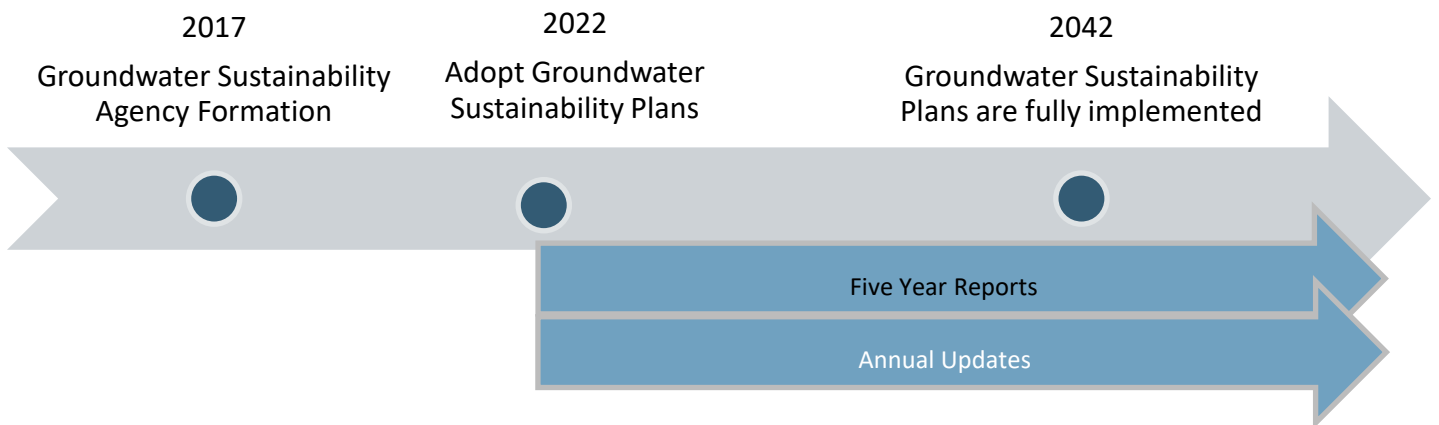
SUBBASINS AND GROUNDWATER SUSTAINABILITY AGENCIES IN GLENN COUNTY

- **Butte Subbasin**
 - Glenn County GSA
 - Reclamation District 1004
 - Reclamation District 2106
 - Western Canal Water District
- **Colusa Subbasin**
 - Glenn Groundwater Authority
- **Corning Subbasin**
 - Corning Sub-basin GSA



The County is part of two multiagency GSAs in the Colusa and Corning subbasins. The Butte Subbasin GSAs will retain their independent jurisdictional boundaries with the intent of submitting one Groundwater Sustainability Plan for the whole subbasin.

SGMA TIMELINE



WAYS TO GET INVOLVED

- Register on the Glenn County Interested Parties Email List to receive meeting notifications and updates: glennsgma@countyofglenn.net
- Visit the Glenn County Water Resources SGMA website for all subbasin information: <https://www.countyofglenn.net/dept/agriculture/water-resources/sustainable-groundwater-management-act-sgma-0>
- Contact Glenn County Water Resources Program Staff:
Glenn County Department of Agriculture
720 North Colusa Street
PO Box 351
Willows, CA 95988
530-934-6501

Lisa Hunter
lhunter@countyofglenn.net

Sharla Stockton
sstockton@countyofglenn.net