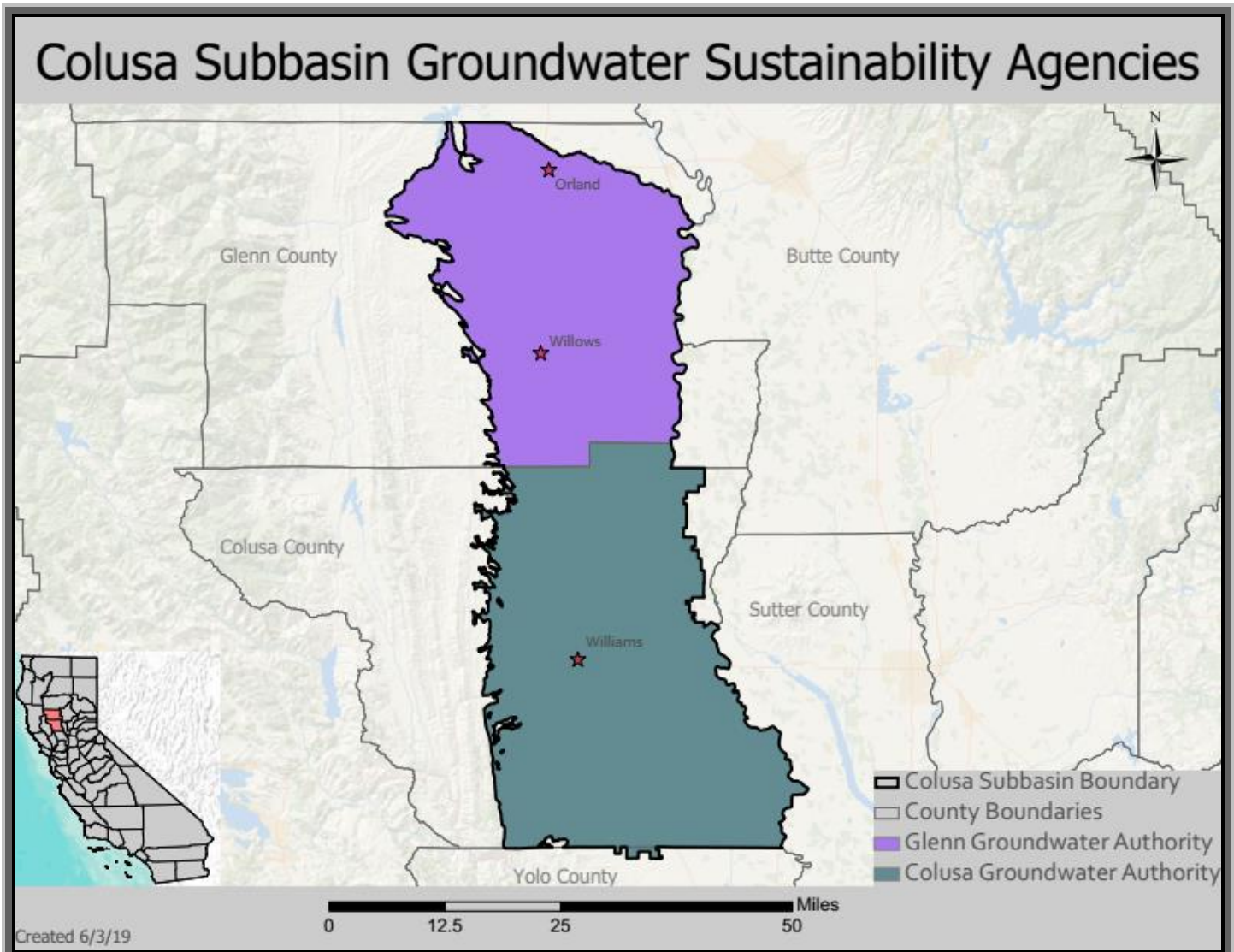


GLENN COUNTY: COLUSA SUBBASIN FACTSHEET

WHAT IS SGMA?

The Sustainable Groundwater Management Act (SGMA) passed in the fall of 2014 establishing a new structure for managing groundwater resources in California. The Department of Water Resources defines groundwater basins and subbasins and assigns a priority designation in relation to SGMA (High, Medium, Low, Very Low). High and Medium priority basins are required to be managed under SGMA by a Groundwater Sustainability Agency (GSA) or the State Water Resources Control Board. GSAs have the opportunity to manage groundwater at the local level by developing and implementing a Groundwater Sustainability Plan by 2022 and ensuring sustainable conditions by 2042 while avoiding six distinct undesirable results. If GSAs are not successful locally, the State Water Resources Control Board will intervene and assume responsibility for basin management. Glenn County has local GSA coverage and is currently compliant with SGMA.



The Colusa Subbasin is a portion of the larger Sacramento Valley Groundwater Basin covering approximately 723,823 acres. The subbasin spans Glenn and Colusa Counties. It is generally bounded by Stony Creek to the north, the Coast Ranges to the west, to the east by the Sacramento River and the Reclamation District 1004 western boundary, and to the south by the Colusa-Yolo County boundary and the Colusa County Water District boundary. The GSA boundaries within the Colusa Subbasin are shown above.

GROUNDWATER SUSTAINABILITY AGENCIES IN THE COLUSA SUBBASIN:

- Colusa Groundwater Authority
- Glenn Groundwater Authority

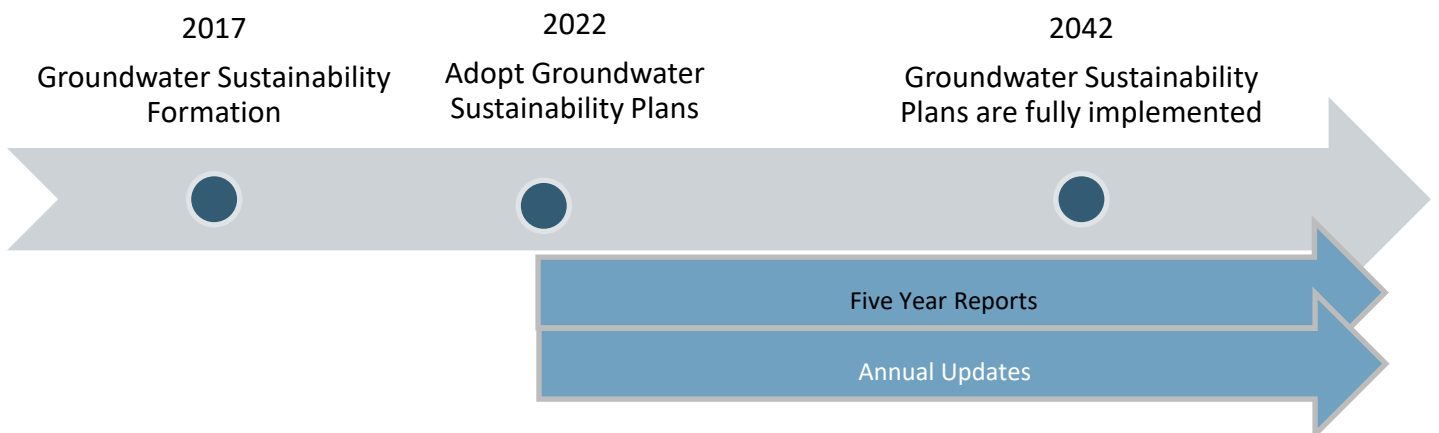
GROUNDWATER SUSTAINABILITY AGENCIES IN GLENN COUNTY:

The Glenn Groundwater Authority (GGA) governs the Glenn County portion of the Colusa Subbasin and consists of nine member agencies (GGA acreage 286,154). For GGA information and meeting announcements visit <https://www.countyofglenn.net/dept/agriculture/water-resources/glenn-groundwater-authority>

MEMBER AGENCIES OF THE GLENN GROUNDWATER AUTHORITY:

- City of Orland
- City of Willows
- County of Glenn
- Glenn-Colusa Irrigation District
- Glide Water District
- Kanawha Water District
- Orland-Artois Water District
- Princeton-Cordora-Glenn Irrigation District
- Provident Irrigation District

SGMA TIMELINE



WAYS TO GET INVOLVED

- Register on the Glenn County SGMA email list to receive meeting notifications and updates: glennsgma@countyofglenn.net
- Visit the Water Resources SGMA website for all subbasin information: <https://www.countyofglenn.net/dept/agriculture/water-resources/sustainable-groundwater-management-act-sgma-0>

- Contact Glenn County Water Resources Program Staff:

Glenn County Department of Agriculture
720 North Colusa Street
PO Box 351
Willows, CA 95988
530-934-6501

Lisa Hunter
lhunter@countyofglenn.net

Sharla Stockton
sstockton@countyofglenn.net