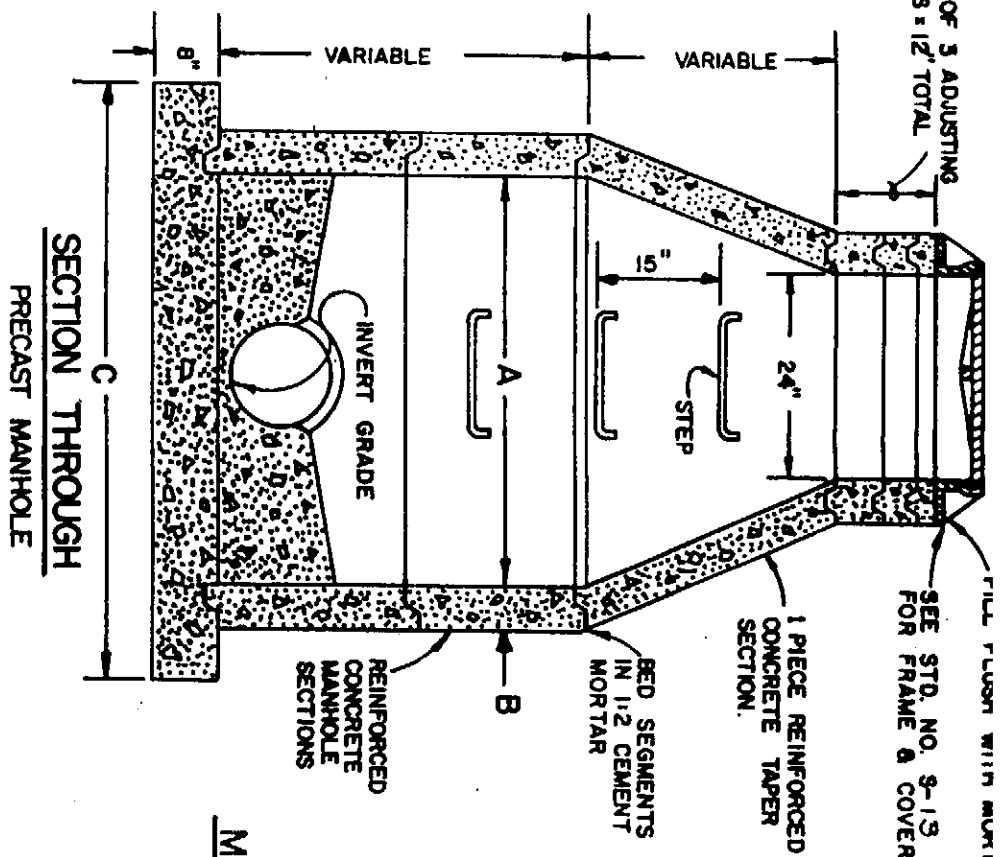
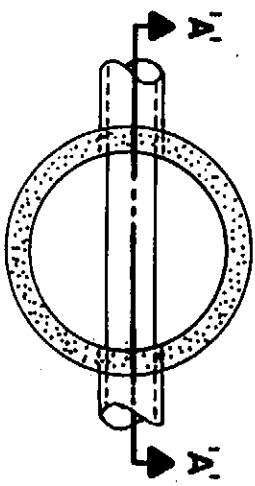


MIN. OF 3 ADJUSTING RINGS = 12" TOTAL

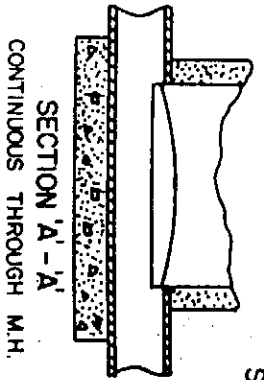
FILL FLUSH WITH MORTAR  
SEE STD. NO. 9-13 FOR FRAME & COVER DETAIL



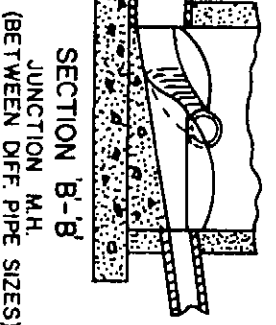
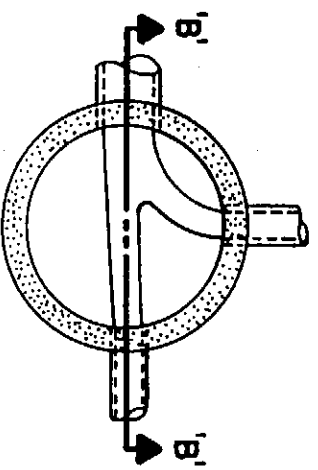
M.H. DIAMETER - A	B	C
36"	4"	56"
42"	4 1/2"	63"
48"	5"	70"
60"	6"	84"



PLAN  
SHAPING M.H. CHANNEL

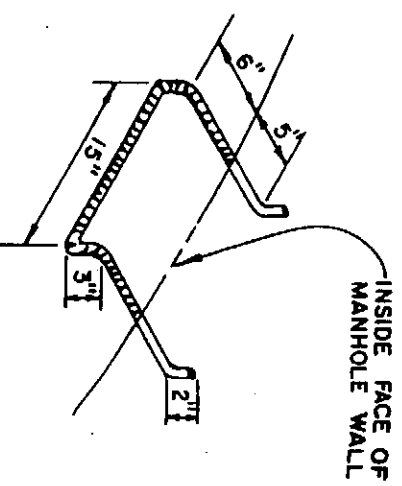


SECTION 'A-A'  
CONTINUOUS THROUGH M.H.



SECTION 'B-B'  
JUNCTION M.H.  
(BETWEEN DIFF. PIPE SIZES)

STEPS TO BE FABRICATED OF 3/4" STEEL ROD AND GALVANIZED  
STEPS NOT REQUIRED UNLESS SPECIFIED IN SPECIAL PROVISIONS



MANHOLE STEP DETAIL

COUNTY OF GLENN — SUBDIVISION STANDARDS

STANDARD MANHOLE (PRECAST)  
(NO SCALE)

REV. DATE	DWG. NO.

S-9